

# THE PRESTWICH

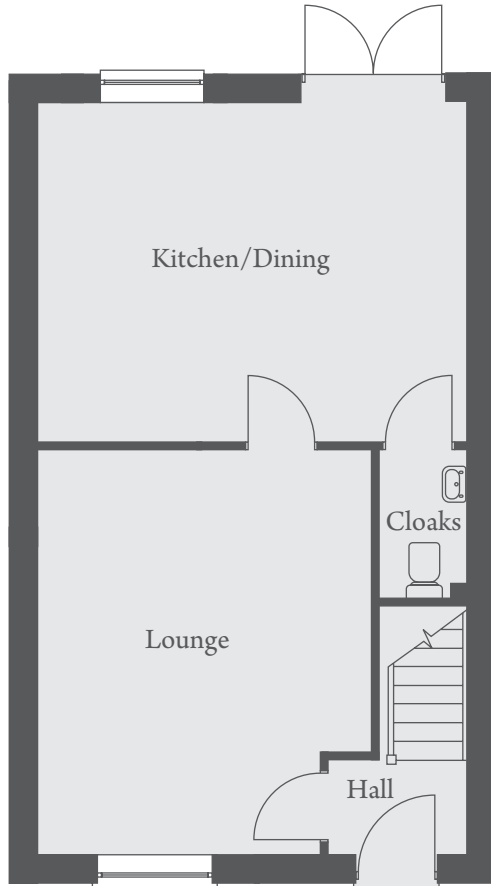
FOUR BEDROOM HOME



# THE PRESTWICH

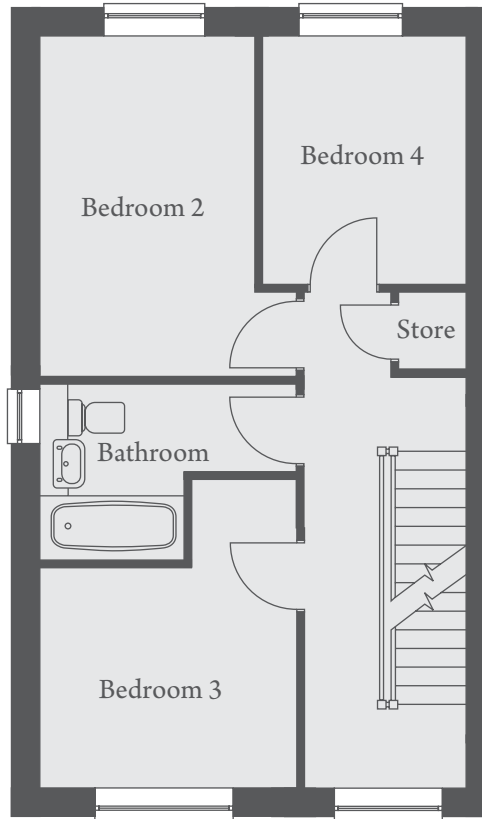


FOUR BEDROOM HOME  
PLOTS 19 & 20



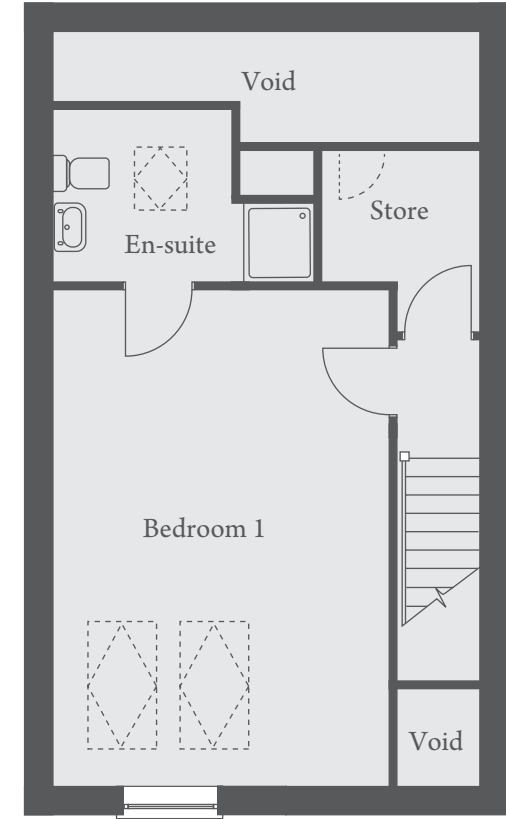
## GROUND FLOOR

Kitchen/Dining.....5174 x 4113mm ..... 17'0" x 13'6"  
Lounge .....4040 x 4883mm ..... 13'3" x 16'0"



## FIRST FLOOR

Bedroom 2.....2637 x 4103mm ..... 8'8" x 13'6"  
Bedroom 3.....3041 x 2714mm ..... 10'0" x 8'11"  
Bedroom 4.....2473 x 3002mm ..... 8'1" x 9'10"



## SECOND FLOOR

Bedroom 1.....4065 x 5887mm ..... 13'4" x 19'3"

Landscaping and configuration may vary from plot to plot. Please refer to Sales Consultant for further details. All dimensions are approximate and should not be used for carpet sizes, appliance spaces, or furniture.  
We operate a policy of continuous improvement and individual features such as kitchen and bathroom layouts, doors, windows, garages and elevational treatments may vary from time to time.  
Consequently these particulars should be treated as general guidance only and do not constitute a contract, part of a contract or a warranty.